

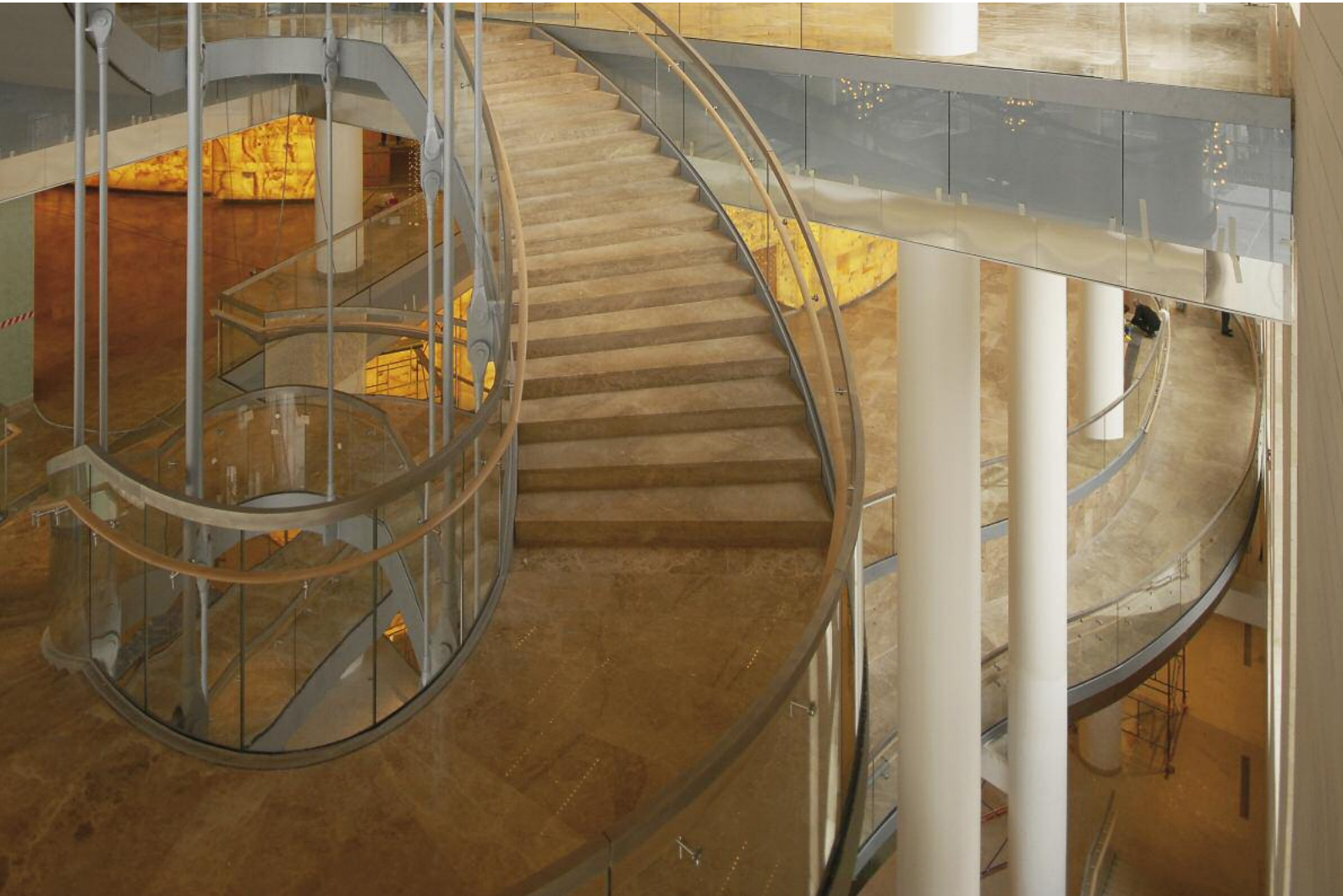
WENNA GLAS



**CURVED GLASS SOLUTIONS**  
> architecture + interior design

best in bending™

[www.wennaglas.com](http://www.wennaglas.com)



## innovative craftsmanship since 1862

Our true passion is glass and our renowned expertise is the development and fabrication of CURVED GLASS SOLUTIONS. As a leading supplier in this field we offer a comprehensive and innovative portfolio of customized curved safety glass products for architecture, interior design and furniture, from simple to complex, single units as well as large numbers.

Established in 1862, WENNA GLAS unites experience and skills of trained craftsmen with precision and efficiency of modern industrial processing, both necessary to turn your curved design visions into reality. Flat safety glass complements our versatile product range and allows us to supply entire projects. Our team of experts provides individual consulting for planning and implementing your projects. Excellent service, superior quality and lasting reliability allow us to deliver the best possible value to our international clients.

# CURVED GLASS

## form beyond function

Over the past 30 years glass has completely overturned its traditional utilitarian function to transform itself into the most versatile and adaptable construction material in modern architecture. Transparency is the ubiquitous Zeitgeist determining modern urbanism. In the continuous search for new and distinguished design in structural glazing and interior design the curvature has become a strong trend in the evolution of our cities and living spaces. Many contemporary buildings incorporate a vivid combination of straight and curved lines. Bent glass facades, domes, shop windows, balustrades, walls, shower doors just to name a few, have become popular stylistic elements. It is our unique expertise to develop and manufacture innovative curved glass products necessary to implement new and fascinating forms for architecture und interior design.

*Curved safety glass opens up a world of new design options!*



## best in bending™

Bending glass for architecture and interior design is a form of art, even more so the manufacturing of curved tempered glass for contemporary applications. It needs high-tech equipment and experienced craftsmanship. We have both the technology and the know-how to meet the high standards of quality, functionality and design in modern glazing. We provide the best radial glass bending available!



# PRODUCTS & SERVICES

## CONTOUR® – the curved glass brand

CONTOUR is a comprehensive and innovative portfolio of curved architectural glass products for facades, domes, interior design and furniture. The different products are available annealed, heat strengthened or fully tempered. They can be manufactured in cylindrical radii (min. 500 mm) with CNC accurate cut-outs and in many different shapes. The curved single-pane glass can also be laminated or assembled into double-glazed or triple-glazed insulating glass units, depending on the requirements of the individual applications. The products are fabricated in single pieces as well as in large numbers. For additional protection of the user curved tempered glass can also be put through a heat-soak test to reduce the risk of spontaneous breaking. Flat safety glass complements our versatile product range and allows us to supply entire projects.

### products

The CONTOUR product family offers curved glass solutions at its best.

SECURIT CONTOUR	curved toughened safety glass
SECURIT-H CONTOUR	curved toughened safety glass with heat-soak test
PLANIDUR CONTOUR	curved heat strengthened glass
STADIP CONTOUR	curved laminated safety glass
CLIMAPLUS CONTOUR	curved double-glazed insulating glass units
CLIMATOP CONTOUR	curved triple-glazed insulating glass units

### additional finishing

Heat-soak testing, design and screen-printing, enamelling, (nano-) coatings, and much more ...

### glass types

The following glass types are available for bending: float glass, etched glass, low-iron glass, tinted glass, anti-reflection glass, cast glass, mirrored glass, screen printed glass, enamelled glass, thermal insulation glass and solar control glass (soft coating and hard coating). Others are available on request. We continuously test new glass types and coatings to enlarge our product portfolio.

### glass dimensions & radii

Our offer ranges from large-scale formats for impressive architectural applications, such as insulating glass units with floor height, to small radii for the use in spiral staircases and curved railings. Most CONTOUR products are available in following dimensions, others are available on demand:

Min. radius	Glass thickness	Maximum size		Minimum size		Aspect ratio
		Girth	Hight	Girth	Hight	
500 mm	4–12 mm	1200 mm	2400 mm	400 mm	400 mm	1:20
1000 mm	6–19 mm	2440 mm	3600 mm	500 mm	500 mm	1:20

### project consulting

Our team of experts provides individual consulting for planning and implementing your projects.

# CONTOUR® PRODUCT RANGE

## SECURIT® CONTOUR®

SECURIT CONTOUR is a monolithic curved and thermally toughened single-pane safety glass. After the tempering process it shows a significantly higher resistance to mechanical and thermal stresses than conventional annealed curved glass. It creates harmonious space structuring for interior design purposes. Adventurous outlines become possible, such as curved shower doors, show cases, vitrines, shop windows and furniture components.



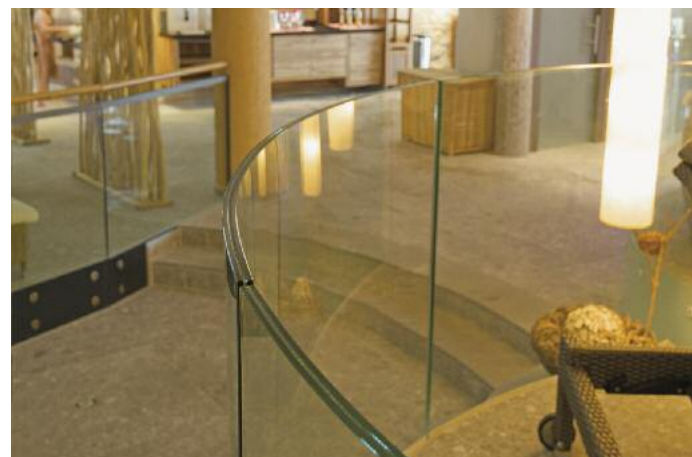
## PLANIDUR® CONTOUR®

PLANIDUR CONTOUR is a monolithic curved and heat-strengthened glass. The heat-treatment provides an increased resistance to mechanical and thermal stresses than conventional annealed curved glass but less than fully tempered glass. When broken, it shatters into larger fragments. With its specific properties, it improves stability in the event of breakage. Therefore it is mainly used to fabricate curved laminated glass installed in balustrades and railings or assembled into insulating glass units for overhead glazing.



## STADIP® CONTOUR®

STADIP CONTOUR is a curved laminated multi-layer safety glass which comprises of two or more sheets of glass bonded together with one or more durable interlayers of plastic film. It can consist of annealed, heat strengthened or fully tempered curved glass. It provides outstanding feature such as protection against injury, burglary, violence, noise or UV-light. If the glass breaks, the fragments are usually held in place by the interlayer(s), preventing the user from falling or from being injured by the shards.



# CONTOUR® PRODUCT RANGE



## CLIMAPLUS® CONTOUR®

CLIMAPLUS CONTOUR is a comprehensive range of curved double-glazed sealed glass units, which incorporate thermal and sun control glass to provide insulating properties of  $1.0 \text{ W/m}^2\text{K}$ .

## CLIMATOP® CONTOUR®

CLIMATOP CONTOUR stands for a broad range of curved triple-glazed insulating glass units, which set new standards in modern glazing. They combine advanced thermal, solar and noise control as well as a high level of security for people and buildings.



Our state-of-the-art manufacturing process ensures the top quality and high performance of our products. CLIMATOP CONTOUR (curved triple-glazed units) provides an Ug value as low as  $0.5 \text{ W/m}^2\text{K}$ .

# APPLICATIONS

## architecture

facades and overhead glazing  
balustrades and skywalks  
glass domes  
panoramic elevators  
revolving doors systems  
wintergardens  
internal and external shop windows



## interior design

glass walls  
rallings  
stair cases  
interior fittings  
shop, hotel and museum fittings  
shower doors  
art and lightning



## furniture & more

glass furniture and vitrines  
furniture components  
urban furniture  
display cases for food and catering  
display cases for refrigeration units  
finishings for yachts and cruise boats  
photovoltaic appliances



WENNA GLAS is partner of **CLIMAplusSECURIT**<sup>®</sup>  
Zukunft mit Glas



## WENNA GLAS GMBH

Waxenberger Straße 10  
4181 Oberneukirchen, Austria  
+43 732 731008 0  
office@wennaglas.com  
www.wennaglas.com

Copyright Wenna Glas GmbH  
Our terms and conditions apply  
Pictures by Wenna Glas GmbH  
Images are sample pictures  
Data is subject to change  
A10/2015